

www.indiratrade.com



MONDAY

CURRENCY COMMODITIES

WEEKLY REPORT
26 NOV TO 30 NOV 2018

EDGE



INDIRA SECURITIES PVT. LTD.



WEEKLY INDICES CHANGES

INDEX	CLOSE	PREV. CLOSE	Change (%)
SENSEX	34981.02	35158.55	-0.50%
NIFTY	10526.8	10585.2	-0.55%
DOW	24285.9	25989.3	-6.55%
NASDAQ	6938.98	7406.9	-6.32%
FTSE	6952.86	7105.34	-2.15%
NIKKEI	21775	22283	-2.28%
DAX	11192.7	11529.2	-2.92%
CAC	4946.95	5106.75	-3.13%

Market Round Up:

- Euro falls on economic growth fears: - The euro fell nearly half a percent on Friday after signs that economic growth could be slowing across the euro zone. Euro zone business growth slowed much faster than expected this month, a widely-watched Purchasing Managers Index (PMI) survey showed. The disappointing readings were hastened by an ongoing U.S.-led trade war and will likely be of concern to the European Central Bank which is expected to draw a line under its 2.6-billion-euro asset purchase program next month.
- U.S. Stock Futures Drop; Copper Declines with Oil: Markets Wrap: - U.S. equity futures pointed to a weaker open as stocks in Europe and Asia declined on Friday. Brent oil dipped below \$60 and headed for a seventh weekly loss on signs of oversupply, leading a broad retreat in commodities.
- Falling commodity prices are just one of several indicators that reinforce investor concern about weakening global growth. Political turmoil in Europe, a lingering uncertainty over the Brexit agreement and a trade war that's engulfed the world's biggest economies add to nervousness. Slowing growth is one of several prospects that may lead the Federal Reserve toward more caution in 2019 should it raise rates next month.

RBI REFRANCE RATE

INDEX	CLOSE	PREV. CLOSE
USDINR	71.1787	72.7347
EURINR	81.1883	82.5195
JPYINR	62.9700	63.8400
GBPINR	91.0423	94.8737

FII FIGURES

DATE	FII FIGURES IN CRORE
19/11	1103
20/11	-753
21/11	-1652
22/11	446
23/11	0
NET	-856

DII FIGURES

DATE	DII FIGURES IN CRORE
19/11	-310
20/11	-44
21/11	607
22/11	49
23/11	0
NET	+302



DOLLAR INDEX CHART



1. **RSI:** 62.20
2. **ADX:** Indicating Sideways signal
3. **Stochastic Oscillator:** indicating Sideways signal
4. **ATR:** 1.19
5. **Moving averages:** Pair is trading above 50 and 100 Day simple moving averages..

USDINR TECHNICAL CHART (INDIAN RUPEE)



- 1) **RSI:** 79.39
- 2) **ADX:** Indicating positive signal
- 3) **Stochastic Oscillator:** indicating positive signal
- 4) **ATR:** 0.8760
- 5) **Moving averages :** Pair is trading above 50 and 100 Day simple moving averages..



DOMESTIC CURRENCY

Domestic	S2	S1	PIVOT	R1	R2
USDINR	71.98	72.37	72.71	73.11	73.45
EURINR	93.57	94.29	95.35	96.07	97.13
GBPINR	63.73	64.02	64.49	64.78	65.25
JPYINR	71.98	72.37	72.71	73.11	73.45

GLOBAL CURRENCY

Global	S2	S1	PIVOT	R1	R2
DOLLAR INDEX	93.26	94.19	94.78	95.71	96.3
EURUSD	111.86	112.55	112.99	113.68	114.12
GBPUSD	1.29	1.3	1.31	1.31	1.33
USDJPY	1.15	1.15	1.17	1.18	1.19

CURRENCY PERFORMANCE

CURRENCY	CLOSE PRICE	DAY	WEEK	MONTHLY	YEARLY
EURO	1.13362	-0.03%	-1.00%	-0.58%	-4.71%
POUND	1.28072	-0.04%	-0.33%	-0.19%	-3.82%
AUSTRALIAN DOLLAR	0.72447	0.15%	-0.66%	2.10%	-4.69%
NEWZEALAND DOLLAR	0.67847	0.08%	-0.76%	4.05%	-1.82%
YEN	113.22	0.25%	0.61%	1.17%	1.93%
YUAN	6.94119	-0.04%	0.12%	-0.49%	5.21%
SWISS FRANC	0.99818	0.17%	0.47%	-0.34%	1.71%
CANADIAN DOLLAR	1.32137	-0.15%	0.33%	0.61%	3.50%
MEXICAN PESO	20.3939	-0.03%	0.11%	1.69%	9.76%
INDIAN RUPEE	70.65	-0.05%	-1.84%	-3.51%	9.58%
BRAZILIAN REAL	3.8281	0.00%	2.26%	2.53%	18.60%
RUSSIAN RUBBLE	66.535	0.54%	1.42%	1.10%	13.75%
DOLLAR INDEX	96.97	0.06%	0.81%	0.58%	4.38%
KORREAN WON	1128.1	-0.39%	0.27%	-1.28%	3.43%
SOUTH AFRICAN RAND	13.8262	0.02%	-1.35%	-6.03%	0.55%
SINGAPORE DOLLAR	1.37462	-0.03%	0.23%	-0.64%	2.09%
HONGKONG DOLLAR	7.8254	0.00%	-0.08%	-0.22%	0.32%

COMMODITIES

FUNDAMENTAL OF COMMODITIES

MAJOR COMMODITIES

MCX ENERGY WEEKLY

Commodity	S2	S1	Pivot	R1	R2
Crude oil- Sep	3654.7	3854.3	4167.7	4367.3	4680.7
Natural Gas-Sep	223.9	260.9	309.8	346.8	395.7

MCX BASE METAL WEEKLY

Commodity	S2	S1	Pivot	R1	R2
Copper-Nov	419.1	431.0	437.6	449.5	456.1
Zinc- Sep	177.3	184.8	188.8	196.3	200.3
Lead- Sep	135.7	139.7	142.1	146.1	148.5
Nickel- Sep	790.4	803.6	820.9	834.1	851.4

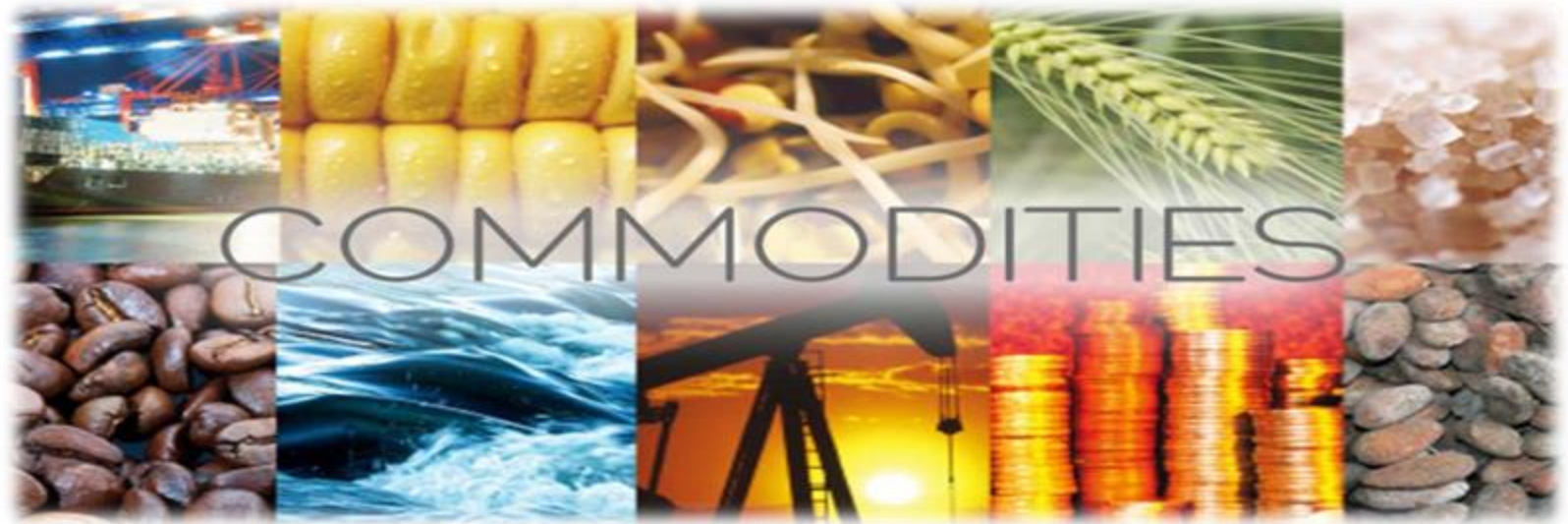
PRECIOUS METAL WEEKLY

Commodity	S2	S1	Pivot	R1	R2
Gold-Oct	30363.0	30685.0	30927.0	31249.0	31491.0
Silver-Dec	35608.3	36299.7	36727.3	37418.7	37846.3

International Commodity	S2	S1	Pivot	R1	R2	CMP	PREV CLOSE
Gold COMEX	\$1,186.33	\$1,204.67	\$1,215.33	\$1,233.67	\$1,244.33	\$1,228.00	\$1,223.00
SILVER COMEX	13.67	14.03	14.21	14.57	14.75	14.5	14.38
NYMEX CRUDE	50.93	53.81	57.62	60.5	64.31	54.63	56.68
BRENT CRUDE	60.63	63.82	67.84	71.03	75.05	62.54	67

Updates:

- Oil prices hit year low as OPEC considers output cut: - Oil prices fell to their lowest in more than a year on Friday, on course for their biggest one-month decline since late 2014, even as oil producers considered cutting production to try to stem a rising global surplus.
- Gold Price Knocked Lower as the US Dollar Firms: - Gold trades the best part of 0.5% lower Friday as the US dollar came back to life and hit a new one-week high after Thursday's Thanksgiving slumber. The precious metal is giving back this week's gains and trades just above the 20- and 50-day moving averages at \$1,221/oz. and \$1,216.4/oz. respectively which may provide short-term support.
- Natural Gas Price Fundamental Daily Forecast - Could Retest \$4.082 to \$3.873 Before Finding Support: - With the first major draw out of the way early this winter, traders are now looking for value and the next reliable weather forecast for direction. The current short-term cold spell has already been priced into the market. Traders are now focusing on reports for the first two weeks of December.



MAJOR COMMODITIES

Commodity Major	Price	Day	Weekly	Monthly	Yearly
Crude Oil	50.8571	0.69%	-10.37%	-24.86%	-12.45%
Brent	59.3535	1.14%	-11.18%	-23.71%	-7.08%
Natural gas	4.0902	-5.13%	-12.90%	28.53%	39.81%
Gold	1221.56	0.07%	-0.18%	-0.62%	-5.62%
Silver	14.3481	0.57%	-0.51%	-0.70%	-15.75%
Platinum	838.75	0.03%	-1.68%	0.81%	-11.45%
Palladium	1126.25	0.65%	-3.19%	3.33%	11.70%
Copper	2.7675	-0.31%	-1.36%	1.02%	-11.69%
Lead	1943.25	-1.36%	-2.24%	-2.32%	-20.86%
Aluminum	1936.75	0.70%	1.27%	-2.37%	-8.50%
Tin	19270	-0.82%	-0.77%	-0.31%	-1.46%
Zinc	2672	0.67%	-0.31%	-3.78%	-19.42%



MCX GOLD CHART



Commodity	S2	S1	Pivot	R1	R2
Gold	30363.0	30685.0	30927.0	31249.0	31491.0

GOLD TECHNICAL INDICATOR	
RSI(14)	SELL
STOCH(9,6)	SELL
STOCHRSI(14)	SELL
MACD(12,26)	BUY
ADX(14)	SELL
Williams %R	NETURAL
CCI(14)	SELL
Highs/Lows(14)	BUY
Ultimate Oscillator	SELL
ROC	BUY
BUY	2
SELL	6
NEUTRAL	1
SUMMARY	STRONG BEARISH

GOLD INTERNATIONAL CHART



Commodity	S2	S1	Pivot	R1	R2
Gold	\$1,186.3	\$1,204.7	\$1,215.3	\$1,233.7	\$1,244.3

GOLD INTERNATIONAL TECHNICAL INDICATOR	
RSI(14)	SELL
STOCH(9,6)	BUY
STOCHRSI(14)	SELL
MACD(12,26)	BUY
ADX(14)	BUY
Williams %R	BUY
CCI(14)	BUY
Highs/Lows(14)	BUY
Ultimate Oscillator	BUY
ROC	BUY
BUY	7
SELL	2
NEUTRAL	0
SUMMARY	STRONG BULLISH



MCX SILVER CHART



Commodity	S2	S1	Pivot	R1	R2
Silver	35608.3	36299.7	36727.3	37418.7	37846.3

SILVER TECHNICAL INDICATOR

RSI(14)	SELL
STOCH(9,6)	SELL
STOCHRSI(14)	BUY
MACD(12,26)	SELL
ADX(14)	SELL
Williams %R	SELL
CCI(14)	SELL
Highs/Lows(14)	BUY
Ultimate Oscillator	SELL
ROC	SELL
BUY	2
SELL	8
NEUTRAL	0
SUMMARY	STRONG BEARISH

SILVER INTERNATIONAL CHART



Commodity	S2	S1	Pivot	R1	R2
Silver	\$13.7	\$14.0	\$14.2	\$14.6	\$14.8

SILVER INTERNATIONAL TECHNICAL INDICATOR

RSI(14)	SELL
STOCH(9,6)	SELL
STOCHRSI(14)	BUY
MACD(12,26)	BUY
ADX(14)	BUY
Williams %R	SELL
CCI(14)	SELL
Highs/Lows(14)	BUY
Ultimate Oscillator	SELL
ROC	SELL
BUY	4
SELL	6
NEUTRAL	0
SUMMARY	MILD BEARISH



MCX COPPER CHART



Commodity	S2	S1	Pivot	R1	R2
Copper	419.1	431.0	437.6	449.5	456.1

COPPER TECHNICAL INDICATOR

RSI(14)	SELL
STOCH(9,6)	SELL
STOCHRSI(14)	SELL
MACD(12,26)	SELL
ADX(14)	SELL
Williams %R	NETURAL
CCI(14)	SELL
Highs/Lows(14)	BUY
Ultimate Oscillator	SELL
ROC	BUY
BUY	1
SELL	7
NEUTRAL	1
SUMMARY	STRONG BEARISH

COPPER INTERNATIONAL CHART



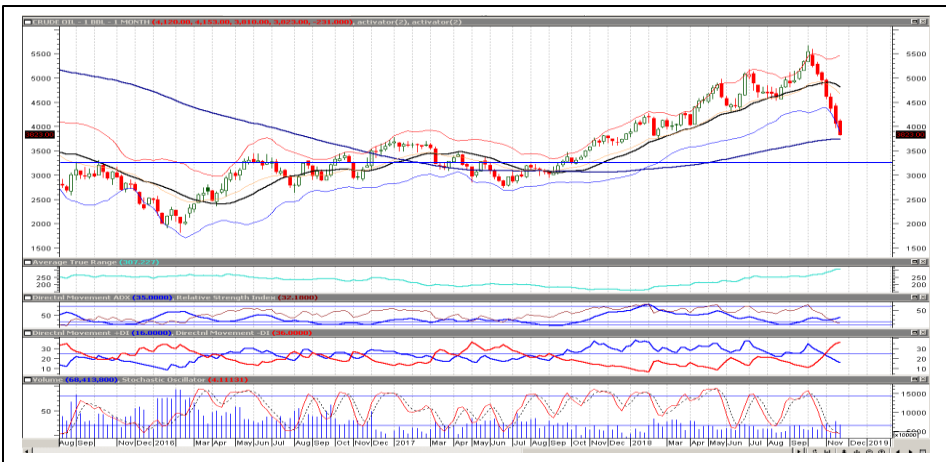
Commodity	S2	S1	Pivot	R1	R2
Copper	\$2.6	\$2.7	\$2.8	\$2.9	\$2.9

COPPER INTERNATIONAL TECHNICAL INDICATOR

RSI(14)	SELL
STOCH(9,6)	SELL
STOCHRSI(14)	BUY
MACD(12,26)	BUY
ADX(14)	BUY
Williams %R	SELL
CCI(14)	SELL
Highs/Lows(14)	BUY
Ultimate Oscillator	SELL
ROC	BUY
BUY	4
SELL	5
NEUTRAL	0
SUMMARY	MILD BEARISH



MCX CRUDE CHART



Commodity	S2	S1	Pivot	R1	R2
Crude oil	3654.7	3854.3	4167.7	4367.3	4680.7

BRENT CRUDE OIL TECHNICAL INDICATOR	
RSI(14)	SELL
STOCH(9,6)	SELL
STOCHRSI(14)	SELL
MACD(12,26)	SELL
ADX(14)	SELL
Williams %R	SELL
CCI(14)	SELL
Highs/Lows(14)	BUY
Ultimate Oscillator	SELL
ROC	SELL
BUY	1
SELL	9
NEUTRAL	0
SUMMARY	STRONG BEARISH

NYMEX CRUDE CHART



Commodity	S2	S1	Pivot	R1	R2
Crude oil	\$50.9	\$53.8	\$57.6	\$60.5	\$64.3

CRUDE.OILNYM TECHNICAL INDICATOR	
RSI(14)	SELL
STOCH(9,6)	BUY
STOCHRSI(14)	SELL
MACD(12,26)	SELL
ADX(14)	SELL
Williams %R	SELL
CCI(14)	SELL
Highs/Lows(14)	BUY
Ultimate Oscillator	SELL
ROC	SELL
BUY	2
SELL	8
NEUTRAL	0
SUMMARY	STRONG BEARISH



MCX NATURAL GAS



Commodity	S2	S1	Pivot	R1	R2
Natural Gas	223.9	260.9	309.8	346.8	395.7

NATURALGAS TECHNICAL INDICATOR

RSI(14)	BUY
STOCH(9,6)	SELL
STOCHRSI(14)	BUY
MACD(12,26)	BUY
ADX(14)	BUY
Williams %R	NETURAL
CCI(14)	BUY
Highs/Lows(14)	BUY
Ultimate Oscillator	SELL
ROC	BUY
BUY	6
SELL	2
NEUTRAL	1
SUMMARY	STRONG BULLISH

NATURAL GAS INTERNATIONAL



Commodity	S2	S1	Pivot	R1	R2
Natural Gas	\$3.1	\$3.7	\$4.3	\$4.9	\$5.5

NATURAL GAS INTER. TECHNICAL INDICATOR

RSI(14)	BUY
STOCH(9,6)	SELL
STOCHRSI(14)	BUY
MACD(12,26)	BUY
ADX(14)	SELL
Williams %R	NETURAL
CCI(14)	BUY
Highs/Lows(14)	BUY
Ultimate Oscillator	BUY
ROC	BUY
BUY	6
SELL	2
NEUTRAL	1
SUMMARY	MILD BULLISH

IMP ECONOMOIC DATA TO WATCH FOR THE WEEK

DATE	TIME	CURRENCY	ECONOMIC DATA	FORECAST	PREVIOUS
MonNov 26	2:30pm	EUR	German Ifo Business Climate	102.3	102.8
	7:30pm	EUR	ECB President Draghi Speaks		
TueNov 27	12:00am	GBP	BOE Gov Carney Speaks		
	Tentative	All	OPEC-JMMC Meetings		
	7:00pm	USD	FOMC Member Clarida Speaks		
	8:30pm	USD	CB Consumer Confidence	136.2	137.9
WedNov 28	1:00am	USD	FOMC Member Bostic Speaks		
	Tentative	GBP	Bank Stress Test Results		
	Tentative	GBP	BOE Financial Stability Report		
	7:00pm	USD	Prelim GDP q/q	3.60%	3.50%
	9:00pm	USD	Crude Oil Inventories		4.9M
	10:30pm	USD	Fed Chair Powell Speaks		
ThuNov 29	All Day	EUR	German Prelim CPI m/m	0.20%	0.20%
	1:30pm	EUR	ECB President Draghi Speaks		
	3:00pm	GBP	Net Lending to Individuals m/m	4.5B	4.7B
	7:00pm	USD	Core PCE Price Index m/m	0.20%	0.20%
		USD	Personal Spending m/m	0.40%	0.40%
FriNov 30	12:30am	USD	FOMC Meeting Minutes		
	6:30am	CNY	Manufacturing PMI	50.2	50.2
		CNY	Non-Manufacturing PMI	53.8	53.9
	Day 1	All	G20 Meetings		
	3:30pm	EUR	CPI Flash Estimate y/y	2.10%	2.20%
		EUR	Core CPI Flash Estimate y/y	1.10%	1.10%
	7:30pm	USD	FOMC Member Williams Speaks		
	8:15pm	USD	Chicago PMI	58.6	58.4



204 Amardarshan Building 3rd floor Saket Nagar , Indore-452018

Call: 0731-4797170-173 **Mob:** +91-9303172345 / **Toll Free:** 18001030059 / **SMS:** <INDIRA> to 56070

DISCLAIMER

This report is for private circulation within the Indira Group. This report is strictly confidential and for information of the selected recipient only and may not be altered in any way, transmitted to, copied or distributed, in part or in whole, to any other person or to the media or reproduced in any form. This report should not be construed as an offer or solicitation to buy or sell any securities or any interest in securities. It does not constitute a personal recommendation or take into account the particular investment objectives, financial situations, or any such factor. The information, opinions, estimates and forecasts contained here have been obtained from, or are based upon, sources we believe to be reliable, but no representation of warranty, express or implied, is made by us to their accuracy or completeness. Opinions expressed are our current opinions as of our current opinions as of the data appearing on this material only and are subject to change without notice.